

# Collection - Magda



MAGDA 00  
H 85 P 54 H 58 H 47  
1 m³ 0,31



MAGDA 01  
H 91 P 57 H 61 H 47  
1 m³ 0,4



MAGDA 04  
H 81 P 63 H 61 H 47 H 69  
1 m³ 0,38



MAGDA 05  
H 82 P 70 H 66 H 42 H 64  
1 m³ 0,52



MAGDA 05 LOUNGE  
H 101 P 70 H 66 H 42 H 64  
1 m³ 0,64



MAGDA 06  
H 82 P 65 H 60 H 47 H 64  
1 m³ 0,38



MAGDA 07  
H 99 P 53 H 55 H 75  
1 m³ 0,42



MAGDA 09  
H 80 P 126 H 61 H 44 H 68  
1 m³ 0,77

# Base options



BASE 100



BASE 102



BASE 103



BASE 105



BASE 106



BASE 107



BASE 110



BASE 111



BASE 113



BASE 114



BASE 120



BASE 121



BASE 127



BASE 128



BASE 134



BASE 101



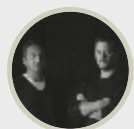
BASE 108



BASE 115



BASE 117



Design  
CarlesiTonelli

Combining different areas of expertise and careers in industrial design, they founded their studio in 2004. They link a passion for design to their knowledge of materials and technologies, and producers' demands to the market trends. They accept the challenge to find

new meanings in simple things, adding harmonious and friendly shapes to both private and public scenarios. Design, art direction and communications are the fields where they perform and interact with customers, in a relationship sharing values and goals.

At its sole discretion, the company reserves the right to change dimensions and type of construction, and to make improvements and other changes to its products. The printing process does not give a perfect

reproduction of the colours. For more accuracy, it is advisable to refer to the samples of materials available on request. All reproduction rights of all or part of the designs and illustrations are reserved worldwide.



Magda



## Practical and charming

design CarlesiTonelli

A simple and embracing shape and a well-placed gap that adds an airy touch to its design underly a collection of chairs and sofas that has become a real bestseller in the sector of commercial interiors. Magda is suitable for the most diverse environments, from the hospitality industry to public spaces and executive offices.

It merges soft and sophisticated shapes with its practical gap between the seat and the backrest, making the chairs easy to move around and clean. Magda comes in a variety of frames and bases, making it suitable for any interior décor and use.



Magda

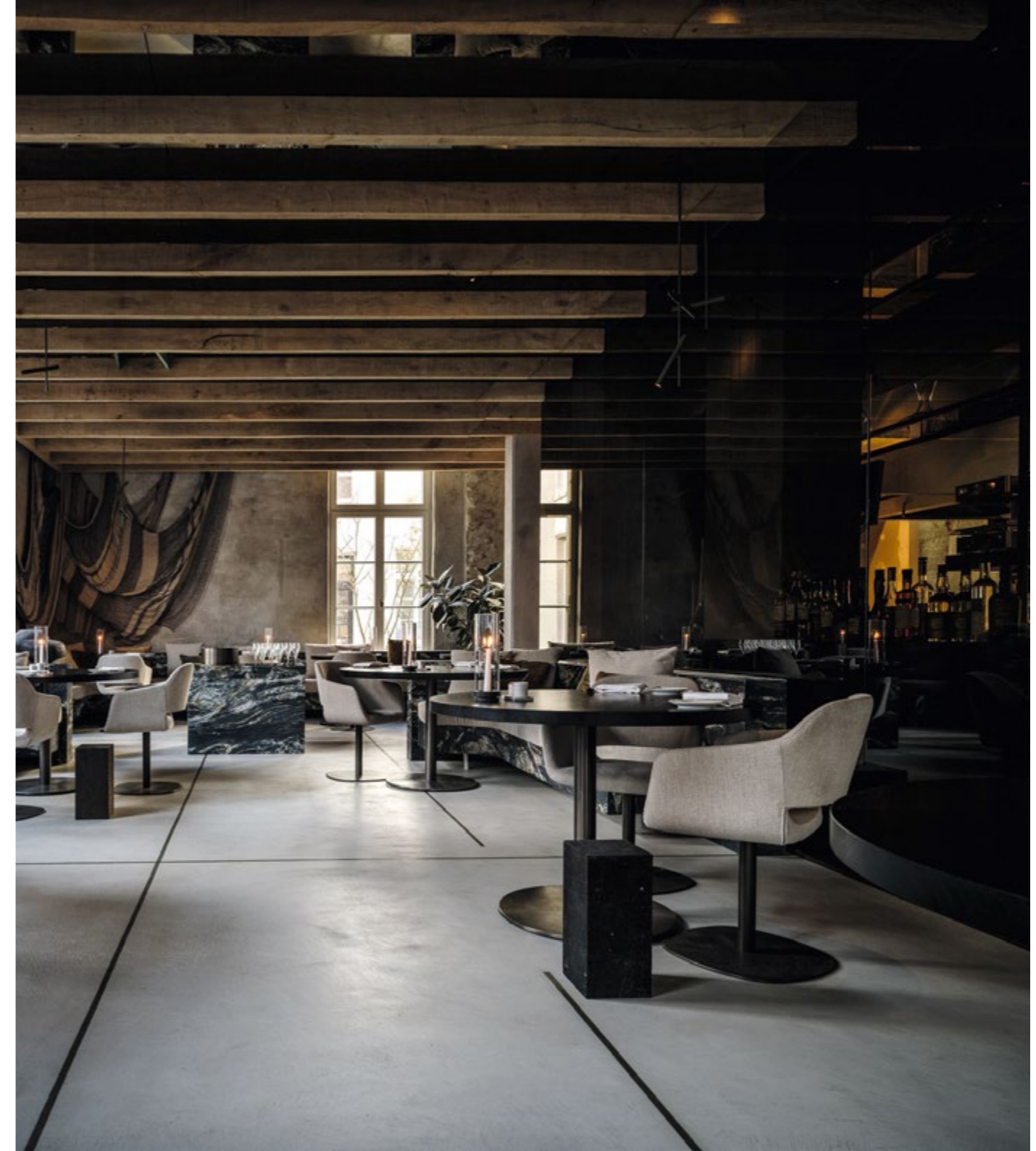
Project: Brunati Sushi  
Restaurant, Salò, Italy.  
Interior Design: Pelizzari Studio.  
Photography: Giorgio Baroni.



+ design Nation



Project: Restaurant Fine Fleur,  
Antwerp, Belgium.  
Interior Design: 'D' Architectural  
Concepts - Dols.

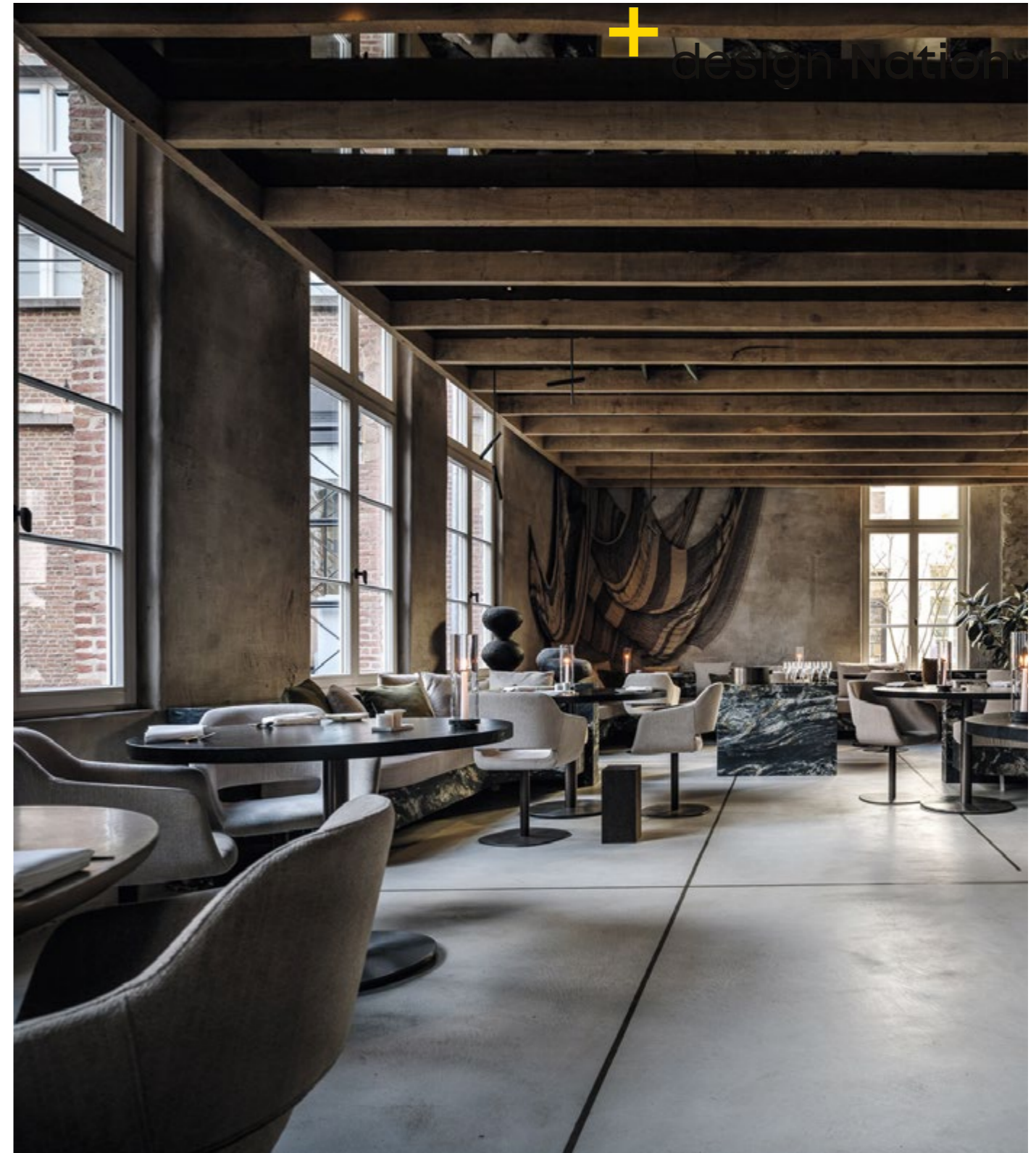


Project: Restaurant Fine Fleur,  
Antwerp, Belgium.  
Interior Design: 'D' Architectural  
Concepts - Dols.





Magda



Project: Restaurant Fine Fleur,  
Antwerp, Belgium.  
Interior Design: 'D' Architectural  
Concepts - Dols.

Magda



ON THE LEFT. Project: Radisson Blu,  
Rostock, Germany.  
Interior Design: Ocean Architects.



Magda



Magda





Magda



Magda



**ON THE LEFT.** Project: Radisson Blu,  
Rostock, Germany.  
Interior Design: Ocean Architects.