

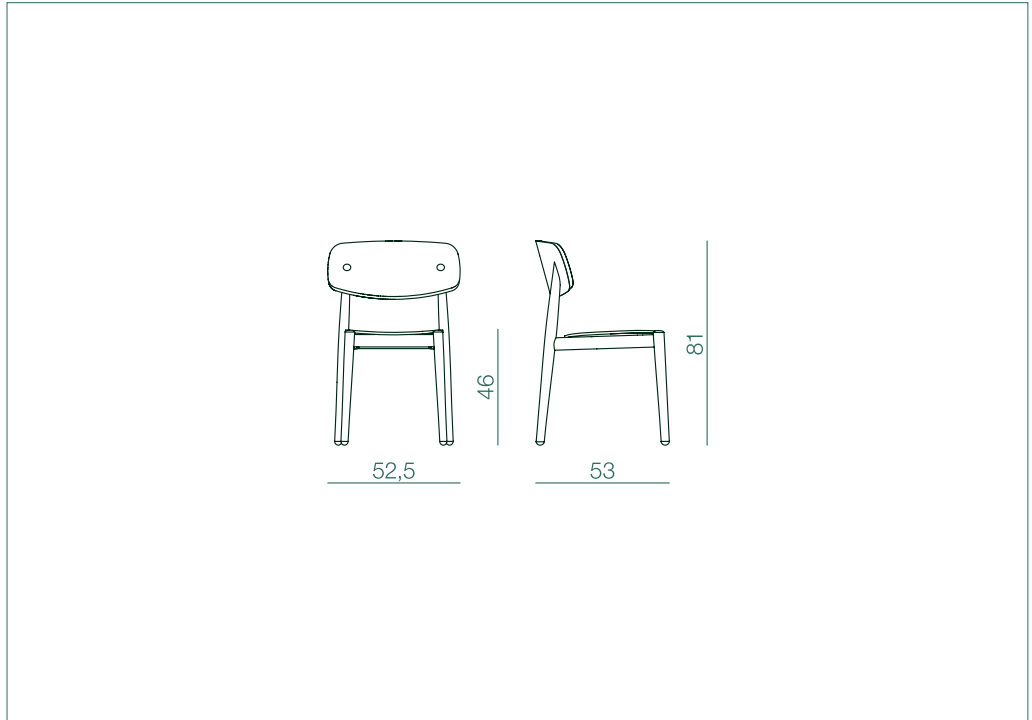
FIZZ chair

design Lorenz + Kaz



FIZZ chair

design Lorenz + Kaz



dimensions cm. 52,5x53x81h
wood beech or oak
frame stained or lacquered massive-wood
backrest curved multi-ply beech; beech or oak or hpl laminate veneered
seat wooden seat: multi-ply beech, beech or oak veneered;
 upholstered seat: curved multi-ply beech covered by D40 foam rubber; covering by Divina Melange 2 from Kvadrat or Nabuk 3M, Acquario and Florida leather; customer's own fabric or leather.
package 2 pcs. per box - \square 0,38 m³ - \square 13 kg - \square m 0,60 x 0,60
technical tests EN 1728:2012
 seat and back fatigue EN 16139:2013 level L2-extreme
 leg forward static load test EN 16139:2013 level L2-extreme
 leg sideways static load test EN 16139:2013 level L2-extreme

frame finishing

beech frame



FG 41
natural beech



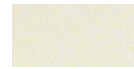
FG 45
walnut stain



FG 53
wenge stain



FGP 64
anthracite black



LC 11
solid white lacquered



LC 16
solid black lacquered



STB 01
sand

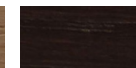


STB 02
pink

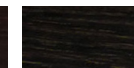
oak frame



RV 60
natural oak



RV 62
dark oak



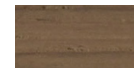
RV 64
charcoal oak



LP 51
white open grain



LP 56
black open grain



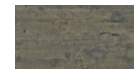
STO 01
sand



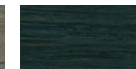
STO 02
pink



STO 03
light blue



STO 04
green



STO 05
emerald



STOB 06
smoke