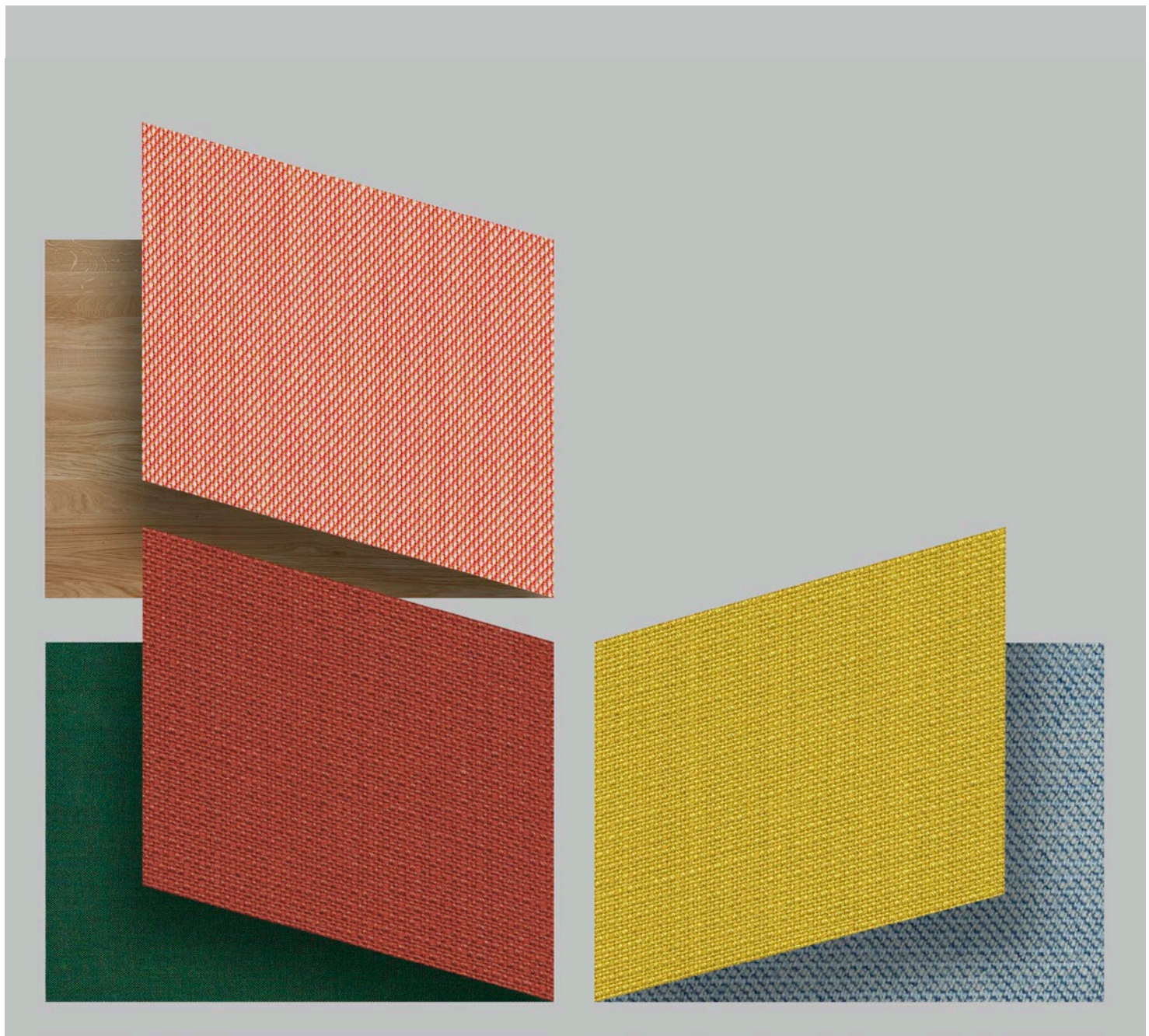


Upholstery
Tapizeriak
Revêtements
Tapizados
— ①②

alki

www.alki.fr



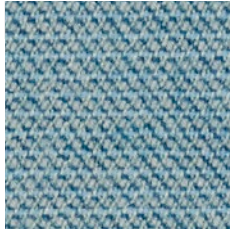
Fabrics

NOTE:

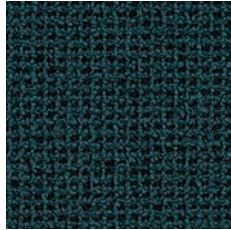
According to your needs Alki can manufacture products with any fabric out of this sample card provided that they meet the required quality standards.



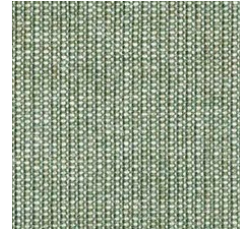
Recycled Fabrics



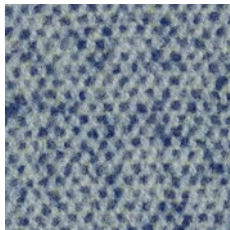
Capture 3302



Grain 66233



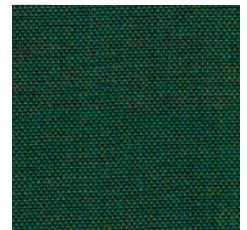
Canvas 926



Vanir 733



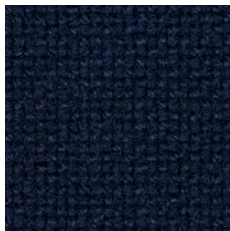
Canvas 726



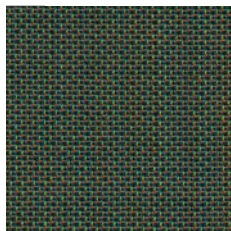
Remix 982



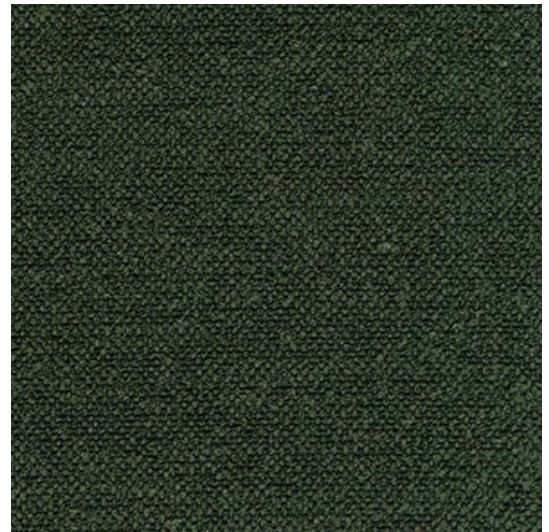
Focus 66011



Hallingdal 65 764



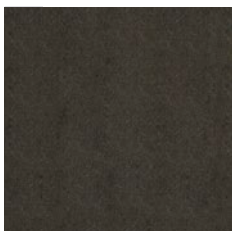
Morph 14101



Ito 38



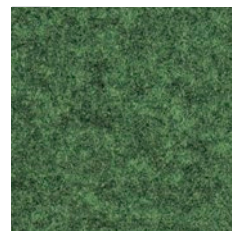
Color may vary
(Laila Backrest only)



**Natural
Wool Felt**



Steel cut quartet 994

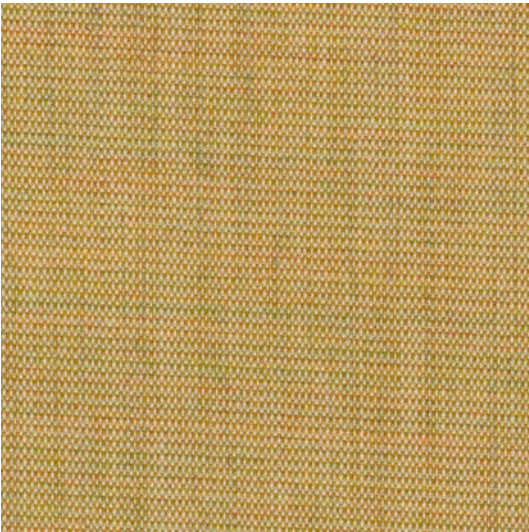


Focus melange 68247

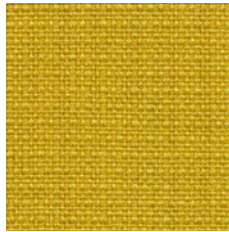


Moss 0001

Fabrics



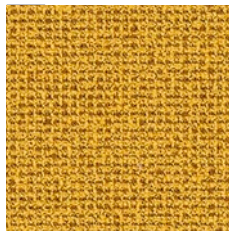
Canvas 414



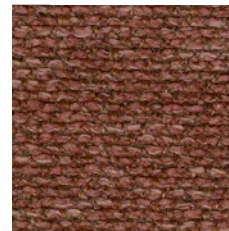
Crisp 4211



Vanir 0413



Grain 62123



Moss 0012



Vanir 943



Capture 5101



Focus 62018



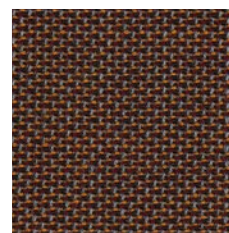
Focus 61036



Steel cut quartet 554



Remix 252

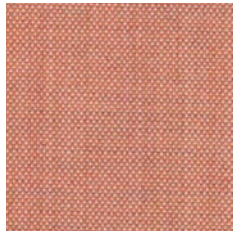


Morph 2103



Steel cut quartet 684

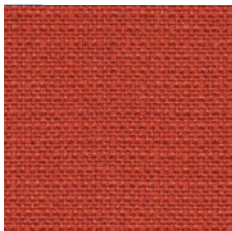
Fabrics



Remix 612



Capture 3201



Crisp 4302



Steel cut trio 515



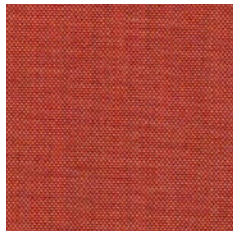
Umber 61278



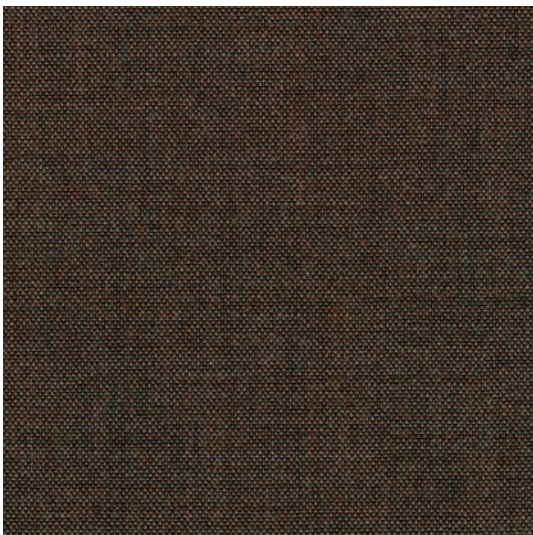
Grain 61251



Umber 64260



Remix 632



Remix 356



Umber 61273



Re wool 218



Remix 346



Crisp 4011

Fabrics



Focus melange 60309



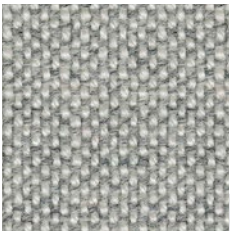
Capture 4101



Capture 4201



Crisp 4033



Hallingdal 65 110



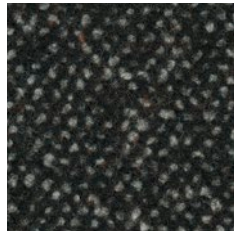
Molly 114



Crisp 4115



Ito 18



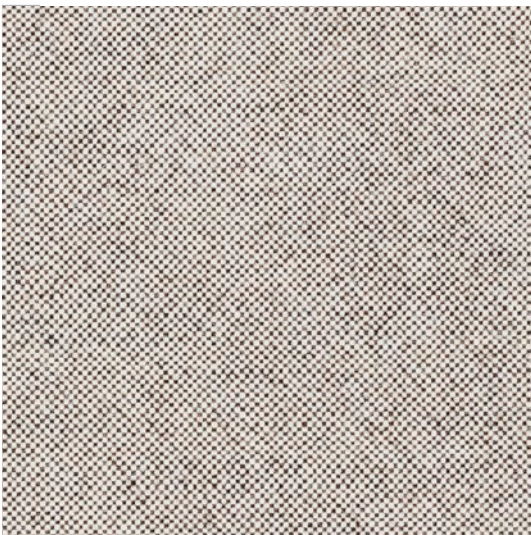
Vanir 373



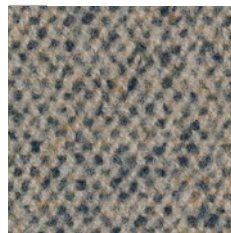
Ito 12



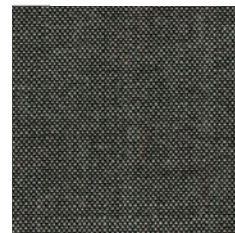
Moss 0015



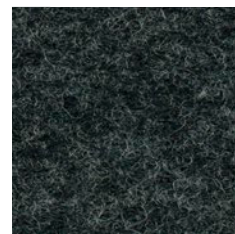
Molly 122



Vanir 243



Remix 152



Focus melange 60900



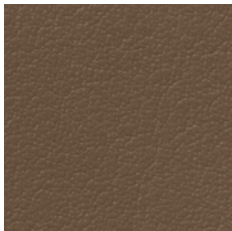
Re wool 198



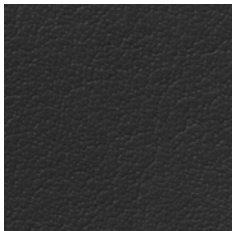
Eco-leather



Palma NF Baltic



Palma NF Smoke



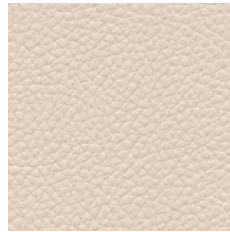
Palma NF Schwartz

Outstanding flame protection, which meets the stringent standard in the innovative material.

Palma NF



Toronto



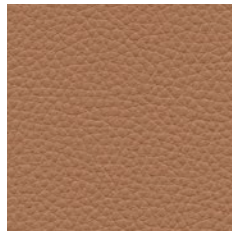
Pearl F6471003



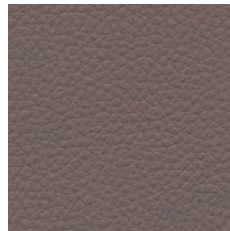
Birch F6471004



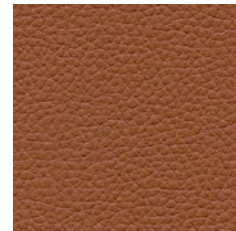
Si 443



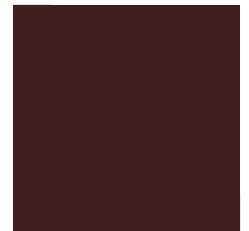
Cappuccino F6471005



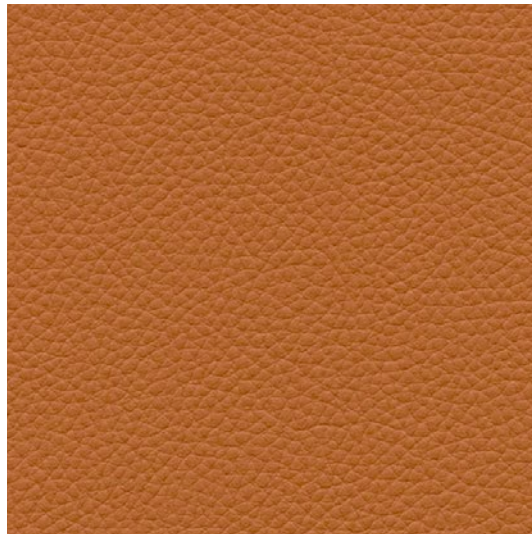
Carob F6471009



Chestnut F6471007



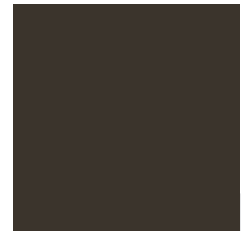
Si 813



Cashmere F6471006



Mocca F6471010



Si 253



Si 113

Sustainable, durable, petroleum derivatives free, and recyclable

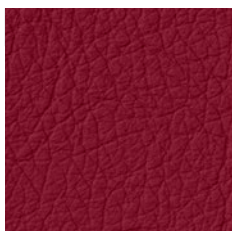


Corn F6471013

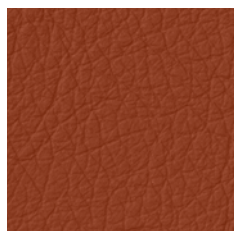
Silicone 3.0



Leather



Gracia 930



Gracia 956 S



Gracia 1967



Gracia 913



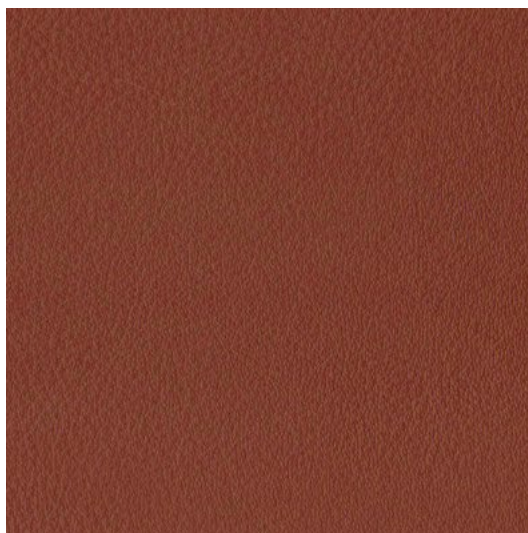
Gracia 902



Gracia 942



Gracia 903



Gracia 1920



Gracia 925



Gracia 943



Gracia 911

Technical information

	UPHOLSTERY & COMPOSITION	ABRASION RESISTANCE	FLAMMABILITY	ADDITIONAL INFORMATION
GROUP 1	ITO by Crevin 53% PES 20% PP 18% PES REC 5% OF REC 4% CO REC 27% recycled yarn	Rubs martindale (EN ISO 12947-2:1998) >100.000	BS5852 Source 0 / EN 1021 Part 1 / NFPA 260 CAL TB-117	OEKO-TEX® STANDARD 100
	GRAIN by Gabriel 2287: 92% post-consumer recycled polyester / 8% polyester 2288: 80% post-consumer recycled polyester / 20% polyester	Rubs martindale (EN ISO 12947-2) : 100 000	BS EN 1021 1&2 Cigarette and Match / BS EN 1021-1 Cigarette / CA TB 117-2013	OEKO-TEX® STANDARD 100
	CANVAS by Kvadrat 90% New wool 10% Nylon	Rubs martindale (EN ISO 12947-2:2016) > 100 000	AS/NZS 1530.3 / BS 5852 crib 5 with treatment/ BS 5852 part 1 / IMO FTP Code 2010 Part 8 / NF D 60 013 / NFPA 260 / SN 198 898 5.3 with treatment / UNI 9175 11M/ US Cal. Bull. 117-2013/ EN 1021-1/2 / ÖNORM B1/Q1 / ASTM E84 Class A Adhered / ASTM E84 Class A Unadhered / EN 13501 B-s2, d0 with treatment	EU Ecolabel / Greenguard certification / Gold HPD / 10 years guarantee
	FOCUS by Gabriel 100% New Zealand wool	Rubs martindale (EN ISO 12947-2) : 100 000	EN1021 1&2/ BS 5852 0&1/ CA TB 117-2013 UNI 9175 Class1 IEMME	Standard 100 by OEKO-TEX® EU Ecolabel / 10 years guarantee
	CAPTURE by Gabriel 85% New Zealand wool 15% Polyamide	Rubs martindale (EN ISO 12947-2) > 200.000	EN 1021 1&2 Cigarette and Match / BS 5852 Part 1 0,1 Cigarette & match / CA TB 117-2013	Standard 100 by OEKO-TEX® EU Ecolabel / 10 years guarantee
	REMIX by Kvadrat 90% New Zealand wool 10% Nylon	Rubs martindale (EN ISO 12947) > 100.000	EN1021 1.2 / NFD60013 / BS 5852 part 1 US Cal. Bull. 117-2013	EU Ecolabel / Greenguard Gold HPD / 10 years guarantee
	CRISP by Gabriel 93% New Zealand wool 7% Polyamide	Rubs Martindale (EN ISO 12947-2) > 200.000	BS 5852 Part 1 0,1 Cigarette & match / EN 1021 1&2 / CA TB 117-2013 / IMO MSC 307 (88) An1 Part 8 / MED Certificate IMO UNI 9175 Class1 IEMME	Standard 100 by OEKO-TEX® EU Ecolabel 10 years guarantee
TORONTO by Skai (Eco-Leathers) Approx. 84% PVC-compound Approx. 16% PES-knitted fabric	Martindale inverse (DIN EN ISO 5470-2) > 300.000	Flame protection DIN EN 1021-1+2 / BS5852 IS-0+1 MVSS302 IMO Certificate 0161-20 IMO FTCP Part8	Sustainable / Vegan Staynu technology	
GROUP 2	PALMA NF by Skai (Eco-Leathers) Approx. 83% PVC-compound Approx. 17% CO-knitted fabric	Martindale inverse (DIN EN ISO 5470-2) > 300.000	NF M1 / BS5852 IS-0+1+5 / DIN4102 (Part 1, B1) DIN4102 (Part 1, B2) DIN53438 (Part 2) / EN1021-1+2 / MVSS302	Sustainable Vegan
	UMBER by Gabriel 85% New Zealand wool / 15% Polyamide	rubs martindale (EN 14465 - ISO 12947-2) : 200 000	BS EN 1021 1&2 Cigarette&Match/BS EN 1021-1 Cigarette/BS EN 1021-2 Match/BS 5852 Part 1 0,1 Cigarette & Match, The Furniture and Furnishing Regulations 1988 / BS 5852 Crib 5 / Class Uno UNI 9175 Class 1 IEMME / CA TB 117-2013	OEKO-TEX® STANDARD 100 EU Ecolabel
	MORPH by Gabriel 85% New Zealand wool 15% Polyamide	Rubs Martindale (EN ISO 12947-2) > 200.000	BS EN 1021 1&2 Cigarette and Match / BS 5852 Part 1 0,1 Cigarette & match / BS 5852 Crib 5 / CA TB 117-2013	Standard 100 by OEKO-TEX® EU Ecolabel / 10 years guarantee
	RE-WOOL by Kvadrat 45% Recycled wool, 45% New wool worsted, 10% Nylon	Rubs martindale (EN ISO 12947) > 50.000	AS/NZS 1530.3 / BS 5852 crib 5 optional treatment / BS 5852 ignition source 3 / BS 5852 part 1 / IMO FTP Code 2010 Part 8 NF D 60 013 / UNI 9175 11M / US Cal. Bull. 117-2013 EN 1021-1/2 / SN 198 898 5.3 optional treatment AS/NZS 3837 class 2 / ÖNORM B1/Q1	EU Ecolabel Greenguard Gold HPD 10 years guarantee
	MOLLY 2 by Kvadrat 100% New Zealand wool	Rubs martindale (EN ISO 12947) > 75-100.000	EN1021 1.2 / DIN 4102 B2 / US Cal. Bull. 117-2013 UNI 9175 11M	EU Ecolabel / Greenguard Gold HPD / 10 years guarantee
SILICONA 3.0 bio material by Antica 100% Silicone. Backing cloth : 100% Polyester	ASTM D 4157-13 : 200 000 double circle abrasion cycles (intensive use)	EN 1021 1&2 / BS 5852 Crib 5, IMO MSC 307/ EN 45545-2/ US Cal. Bull. 117-2013	Sustainable / Vegan COV : Indoor Advantage Gold.	
GROUP 3	STEELCUT QUARTET by Kvadrat 90% New wool (worsted), 10% Nylon	Rubs martindale (EN ISO 12947-2:2016) > 100 000	AS/NZS 1530.3/ AS/NZS 3837 class 2/ ASTM E84 Class B Adhered / BS 5852 crib 5 with treatment / BS 5852 part 1/ IMO FTP Code 2010 Part 8 / NF D 60 013 / NFPA 260 / SN 198 898 5.3 with treatment / UNI 9175 11M / US Cal. Bull. 117-2013/ EN 1021-1/2 / ASTM E84 Class B Unadhered / ÖNORM B1/Q1	EU Ecolabel / Greenguard certification / Greenguard Gold, HPD / 10 years guarantee
	STEELCUT TRIO 3 by Kvadrat 90% New wool (worsted), 10% Nylon	Rubs martindale (EN ISO 12947) > 100.000	EN1021 1.2 / NFD60013 / BS 5852 part 1 DIN 4102 B2 US Cal. Bull. 117-2013	EU Ecolabel / Greenguard Gold HPD / EPD / 10 years guarantee
	FOCUS MELANGE by Gabriel 100% New Zealand wool	Rubs martindale (EN ISO 12947) > 100.000	EN 1021 1&2 / BS 5852 0&1 / CA TB 117-2013 UNI 9175 Class1 IEMME	Standard 100 by OEKO-TEX® EU Ecolabel / 10 years guarantee
GROUP 4	SERIE 900 FUSION by Gracia (Leather) Full Grain European leather slightly buffed. Pigmented and natural smooth grain 1,0 - 1,2mm	Rub fastness (EN ISO 11640 / EN ISO 11641): Dry ≥ 4, 800 cycles Note 4-5 Wet ≥ 3 - 4, 200 cycles - Note 4-5	UNE EN 1021 1&2 / IMO norm MSC.61(67), FTP code, Annex 1, Part 8, Resolution A.652 (16)	100% genuine leather made of European bovine rawhides
	MOSS by Kvadrat 52% Cotton, 14% Acrylic, 6% Linen, 3% Nylon, 3% Polyester, 3% Viscose	Rubs martindale NS-EN ISO 12947-2 :2016 > 50 000	EN 1021-1/2 / IMO FTP Code 2010 Part 8 / BS 5852 part 1 / BS 5852 crib 5 with treatment / AS/ NZS 3837 class 2 / US Cal. Bull. 117-2013 with treatment	Greenguard certification 10 years guarantee
	VANIR by Kvadrat 92% New wool 8% Nylon	Rubs martindale : (EN ISO 12947-2:2016) > 100 000	US Cal. Bull. 117-2013 / IMO FTP Code 2010 Part 8 / EN 1021-1/2 / BS 5852 part 1 / ASTM E84 Class A Unadhered / ASTM E84 Class B Adhered / NF D 60 013 / UNI 9175 11M / ÖNORM B1 / Q1 / BS 5852 crib 5 with treatment / SN 198 898 5.3 with treatment / AS/NZS 3837 class 2	Greenguard certification/ Greenguard Gold , HPD / 10 years guarantee
	HALLINGDAL 65 by Kvadrat 70% New wool 30% Viscose	Rubs martindale (EN ISO 12947) > 100.000	AS/NZS 1530.3 / BS 5852 Crib 5 / BS 5852 ignition source 3 / BS 5852 part 1 / IMO FTP Code 2010 Part 8 / NF D 60 013 / NFPA 260 / UNI 9175 11M / US Cal. Bull. 117-2013 / EN 1021-1/2 / ASTM E84 Class A Adhered / SN 198 898 5.3 optional treatment ÖNORM B1/Q1	EU Ecolabel Greenguard Gold HPD / 10 years guarantee